

Village

Dining table 160x94

by Jasper Morrison

**kettal**

# Dining table 160x94

Designer  
Jasper Morrison

Collection  
Village

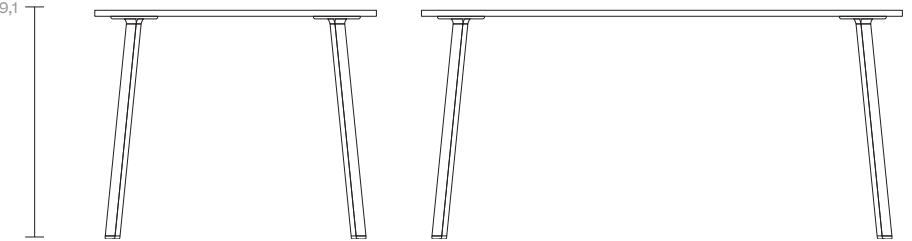
Reference  
KS1300500

1/3

A collection for all outdoor situations, from village house to grand café. The lightweight aluminium structure allows easy handling while the neutral language of its form takes nothing away from the scenery. This chair pays respect to the long standing codes of metal stacking outdoor chairs while gently refreshing the look.

cm/inch

74/29,1



cm/inch

160/62,9

94/37



kettal

# Dining table

## 160x94

Designer  
Jasper Morrison

Collection  
Village

Reference  
KS1300500

2/3

### Materials

#### Aluminium

Antioxy, Heavy Load, Resistant  
En-1421, Kettalize-It, Anti-  
Scratch, Easy Clean, Flame  
Retardant M1, Eco Friendly  
Ecoembes Recycling Process

#### Safety glass

X-Temperature, Kettalize-It,  
Easy Clean, Securized Tempered  
Glass

#### Marble

Antioxy, Mold resistant, Easy  
Clean, Resist U.V., X-Temperature

### Maintenance

Clean with mild soap using  
sponge or cloth. Be gentle  
while cleaning, do not scrub  
aggressively the fabric. Once  
cleaned please make sure you  
remove soap excess.

In case of aggressive stains  
clean with diluted household  
bleach.

Clean stains promptly. The  
longer it remains, more difficult  
will be to remove.

Once cleaned the fabric steam  
iron the fabric. Just use steam,  
be carefull NOT placing the  
iron directly in the fabric it will  
get damage.

### Table Base Colour Options

### Terrain Paints



Chalk  
721



Bone  
678



Tuff  
103



Mist  
773



Flint  
734



London Clay  
729



Mahogany  
100



Carbon  
737



Lilac  
104



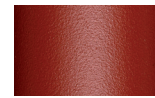
Feldspar  
082



Sepia  
088



Terra Rossa  
087



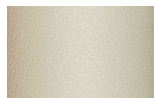
Magma  
086



Terracota  
085



Sahara  
139



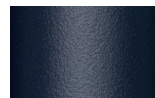
Camomile  
106



Aquamarine  
107



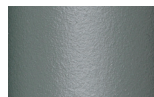
Cobalt  
089



Indigo  
094



Jade  
091



Onyx  
101



Juniper  
092



Amazon  
102



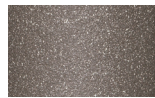
Bronze  
093



Corten  
727



Claystone  
741



Sand Storm  
132



Pumice  
131



Galena  
105



Manganese  
726

# Dining table 160x94


Designer  
Jasper Morrison

Collection  
Village

Reference  
KS1300500

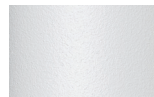
3/3

## Other Characteristics

 Adjustable Legs

## Table Top Colour Options

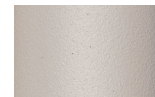
## Terrain Paints



Chalk  
721



Bone  
678



Tuff  
103



Mist  
773



Flint  
734



London Clay  
729



Mahogany  
100



Carbon  
737



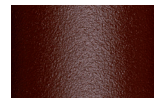
Lilac  
104



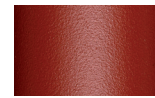
Feldspar  
082



Sepia  
088



Terra Rossa  
087



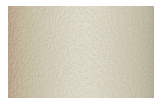
Magma  
086



Terracota  
085



Sahara  
139



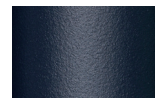
Camomile  
106



Aquamarine  
107



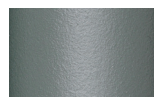
Cobalt  
089



Indigo  
094



Jade  
091



Onyx  
101



Juniper  
092



Amazon  
102



Bronze  
093



Corten  
727



Claystone  
741



Sand Storm  
132



Pumice  
131



Galena  
105



Manganese  
726

## Table Top Colour Options

## Other



Marble  
079

Village

Dining table 220x94

by Jasper Morrison

**kettal**

# Dining table 220x94

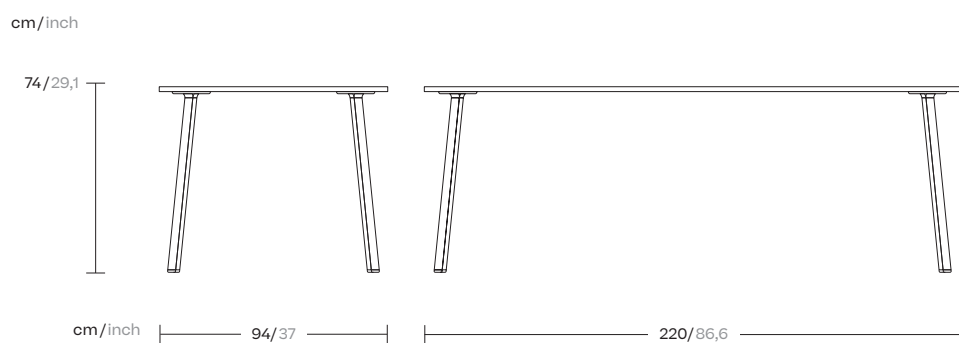
Designer  
Jasper Morrison

Collection  
Village

Reference  
KS1300600

1/3

A collection for all outdoor situations, from village house to grand café. The lightweight aluminium structure allows easy handling while the neutral language of its form takes nothing away from the scenery. This chair pays respect to the long standing codes of metal stacking outdoor chairs while gently refreshing the look.



kettal



# Dining table

## 220x94

Designer  
Jasper Morrison

Collection  
Village

Reference  
KS1300600

2/3

### Materials

#### Aluminium

Antioxy, Heavy Load, Resistant  
En-1421, Kettalize-It, Anti-  
Scratch, Easy Clean, Flame  
Retardant M1, Eco Friendly  
Ecoembes Recycling Process

#### Safety glass

X-Temperature, Kettalize-It,  
Easy Clean, Securized Tempered  
Glass

#### Marble

Antioxy, Mold resistant, Easy  
Clean, Resist U.V., X-Temperature

### Maintenance

Clean with mild soap using  
sponge or cloth. Be gentle  
while cleaning, do not scrub  
aggressively the fabric. Once  
cleaned please make sure you  
remove soap excess.

In case of aggressive stains  
clean with diluted household  
bleach.

Clean stains promptly. The  
longer it remains, more difficult  
will be to remove.

Once cleaned the fabric steam  
iron the fabric. Just use steam,  
be carefull NOT placing the  
iron directly in the fabric it will  
get damage.

### Table Base Colour Options

### Terrain Paints



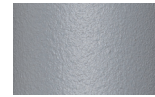
Chalk  
721



Bone  
678



Tuff  
103



Mist  
773



Flint  
734



London Clay  
729



Mahogany  
100



Carbon  
737



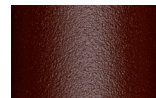
Lilac  
104



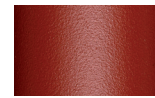
Feldspar  
082



Sepia  
088



Terra Rossa  
087



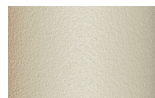
Magma  
086



Terracota  
085



Sahara  
139



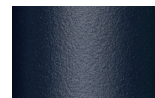
Camomile  
106



Aquamarine  
107



Cobalt  
089



Indigo  
094



Jade  
091



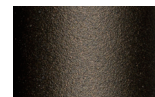
Onyx  
101



Juniper  
092



Amazon  
102



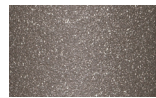
Bronze  
093



Corten  
727



Claystone  
741



Sand Storm  
132



Pumice  
131



Galena  
105



Manganese  
726

# Dining table 220x94

Designer  
Jasper Morrison

Collection  
Village

Reference  
KS1300600

3/3

## Other Characteristics

 Adjustable Legs

## Table Top Colour Options

## Terrain Paints



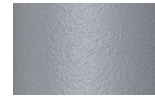
Chalk  
721



Bone  
678



Tuff  
103



Mist  
773



Flint  
734



London Clay  
729



Mahogany  
100



Carbon  
737



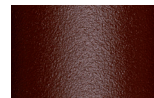
Lilac  
104



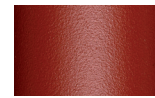
Feldspar  
082



Sepia  
088



Terra Rossa  
087



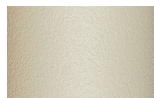
Magma  
086



Terracota  
085



Sahara  
139



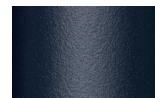
Camomile  
106



Aquamarine  
107



Cobalt  
089



Indigo  
094



Jade  
091



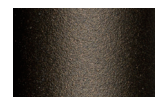
Onyx  
101



Juniper  
092



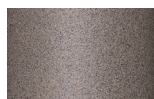
Amazon  
102



Bronze  
093



Corten  
727



Claystone  
741



Sand Storm  
132



Pumice  
131



Galena  
105



Manganese  
726

## Table Top Colour Options

## Other



Marble  
079