

Bitta

Centre table

by Rodolfo Dordoni

**kettal**

# Centre table

Designer  
Rodolfo Dordoni

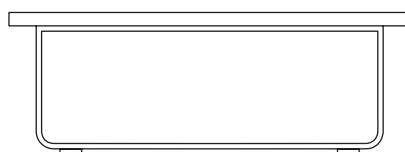
Collection  
Bitta

Reference  
KS7002400

1/4

Kettal Bitta is characterised by a combination of aluminium frames, seats of braided polyester and comfortable cushions, teak and stone for the table tops. My aim was to create dense braiding that would still let the air through, reminiscent of the braiding of the ropes used to moor boats (hence the name Bitta, which means 'mooring' in Italian), which makes the pieces look lightweight but, at the same time, they look just like cosy nests in natural colours to sit back and relax in.

cm/inch



75/29,5

26/10,2



cm/inch

150/59



kettal

# Centre table

Designer  
Rodolfo Dordoni

Collection  
Bitta

Reference  
KS7002400

2/4

## Materials

**Stone**  
Antioxy, X-Temperature, Resist  
U.V., En-581-4, Easy Clean, Eco  
Friendly

**Teak**  
Teak A-Grade, Eco Friendly  
Oeko-Tek

**Aluminium**  
Antioxy, Heavy Load, Resistant  
En-1421, Kettalize-It, Anti-  
Scratch, Easy Clean, Flame  
Retardant M1, Eco Friendly  
Ecoembes Recycling Process

## Maintenance

Clean with mild soap using  
sponge or cloth. Be gentle  
while cleaning, do not scrub  
aggressively the fabric. Once  
cleaned please make sure you  
remove soap excess.

In case of aggressive stains  
clean with diluted household  
bleach.

Clean stains promptly. The  
longer it remains, more difficult  
will be to remove.

Once cleaned the fabric steam  
iron the fabric. Just use steam,  
be carefull NOT placing the  
iron directly in the fabric it will  
get damage.

## Table Base Colour Options

## Terrain Paints (for Aluminium)



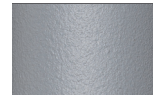
Chalk  
721



Bone  
678



Tuff  
103



Mist  
773



Flint  
734



London Clay  
729



Mahogany  
100



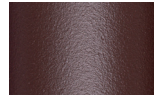
Carbon  
737



Lilac  
104



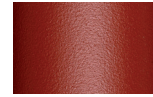
Feldspar  
082



Sepia  
088



Terra Rossa  
087



Magma  
086



Terracota  
085



Sahara  
139



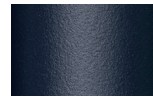
Camomile  
106



Aquamarine  
107



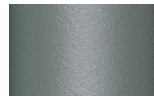
Cobalt  
089



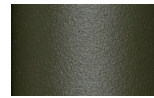
Indigo  
094



Jade  
091



Onyx  
101



Juniper  
092



Amazon  
102



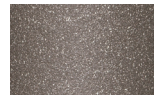
Bronze  
093



Corten  
727



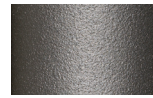
Claystone  
741



Sand Storm  
132



Pumice  
131



Galena  
105



Manganese  
726

# Centre table


Designer  
Rodolfo Dordoni

Collection  
Bitta

Reference  
KS7002400

3/4

## Other Characteristics

 Underporch

## Table Top Colour Options

## Terrain Paints (for Aluminium)



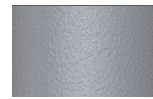
Chalk  
721



Bone  
678



Tuff  
103



Mist  
773



Flint  
734



London Clay  
729



Mahogany  
100



Carbon  
737



Lilac  
104



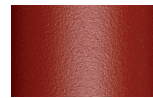
Feldspar  
082



Sepia  
088



Terra Rossa  
087



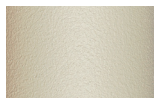
Magma  
086



Terracota  
085



Sahara  
139



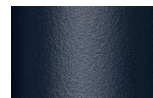
Camomile  
106



Aquamarine  
107



Cobalt  
089



Indigo  
094



Jade  
091



Onyx  
101



Juniper  
092



Amazon  
102



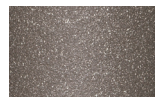
Bronze  
093



Corten  
727



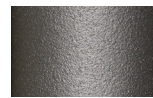
Claystone  
741



Sand Storm  
132



Pumice  
131



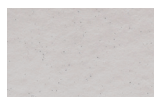
Galena  
105



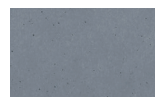
Manganese  
726

## Table Top Colour Options

## Glaze Paints



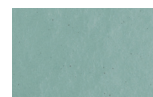
Dolomite  
373



Indian Sapphire  
371



Montana  
377



Erinite  
376



Black Diamond  
374



Smoky Quartz  
370



Jasper  
375



Obsidian  
372

# Centre table

Designer  
Rodolfo Dordoni

Collection  
Bitta

Reference  
KS7002400

4/4

## Table Top Colour Options

## Others



Marble  
079



Teak  
904



Stone  
150