

Roll

Centre table Ø135

by Patricia Urquiola

**kettal**

# Centre table Ø135

Designer  
Patricia Urquiola

Collection  
Roll

Reference  
KS2300700

1/3

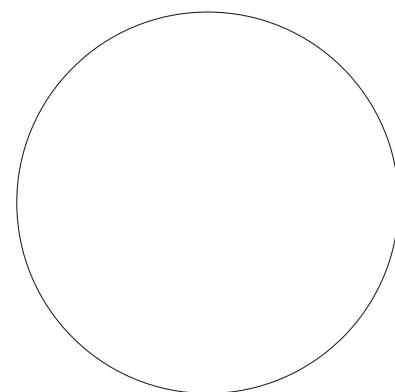
This ironical intervention on the conventional upholstery converts a regular backrest into two independent 'wraps' connected by colorful straps. A graphical aluminum structures frames the protagonist of this chair, the cushions.

cm/inch

34/13,3

cm/inch

Ø50/19,6



Ø135/53,14



kettal

# Centre table

## Ø135

Designer  
Patricia Urquiola

Collection  
Roll

Reference  
KS2300700

2/3

### Materials

#### Aluminium

Antioxy, Heavy Load, Resistant  
En-1421, Kettalize-It, Anti-  
Scratch, Easy Clean, Flame  
Retardant M1, Eco Friendly  
Ecoembes Recycling Process

#### Marble

Antioxy, Mold resistant, Easy  
Clean, Restist U.V., X-Temperature

#### Teak

Teak A-Grade, Eco Friendly  
Oeko-Tek

#### Concrete

Restist U.V., X-Temperature,  
Stronj

### Maintenance

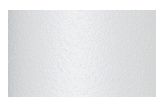
Clean with mild soap using  
sponge or cloth. Be gentle  
while cleaning, do not scrub  
aggressively the fabric. Once  
cleaned please make sure you  
remove soap excess.

In case of aggressive stains  
clean with diluted household  
bleach.

Clean stains promptly. The  
longer it remains, more difficult  
will be to remove.

Once cleaned the fabric steam  
iron the fabric. Just use steam,  
be carefull NOT placing the  
iron directly in the fabric it will  
get damage.

### Table Base Colour Options



Chalk  
721



Bone  
678



Tuff  
103



Mist  
773



Flint  
734



London Clay  
729



Mahogany  
100



Carbon  
737



Lilac  
104



Feldspar  
082



Sepia  
088



Terra Rossa  
087



Magma  
086



Terracota  
085



Sahara  
139



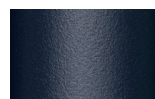
Camomile  
106



Aquamarine  
107



Cobalt  
089



Indigo  
094



Jade  
091



Onyx  
101



Juniper  
092



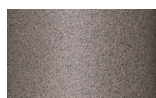
Amazon  
102



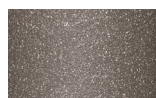
Bronze  
093



Corten  
727



Claystone  
741



Sand Storm  
132



Pumice  
131



Galena  
105



Manganese  
726

### Table Top Colour Options



Teak  
904



Marble  
079

### Other

# Centre table Ø135

Designer  
Patricia Urquiola

Collection  
Roll

Reference  
KS2300700

3/3

## Table Top Colour Options

## Terrain Paints



Chalk  
721



Bone  
678



Tuff  
103



Mist  
773



Flint  
734



London Clay  
729



Mahogany  
100



Carbon  
737



Lilac  
104



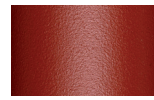
Feldspar  
082



Sepia  
088



Terra Rossa  
087



Magma  
086



Terracota  
085



Sahara  
139



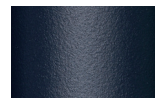
Camomile  
106



Aquamarine  
107



Cobalt  
089



Indigo  
094



Jade  
091



Onyx  
101



Juniper  
092



Amazon  
102



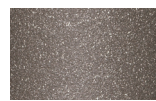
Bronze  
093



Corten  
727



Claystone  
741



Sand Storm  
132



Pumice  
131



Galena  
105



Manganese  
726

Roll

Centre table Ø90

by Patricia Urquiola

**kettal**

# Centre table Ø90

Designer  
Patricia Urquiola

Collection  
Roll

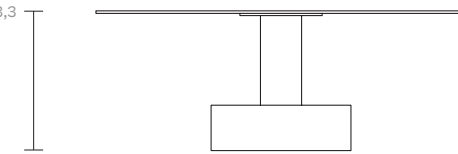
Reference  
KS2300600

1/3

This ironical intervention on the conventional upholstery converts a regular backrest into two independent 'wraps' connected by colorful straps. A graphical aluminum structures frames the protagonist of this chair, the cushions.

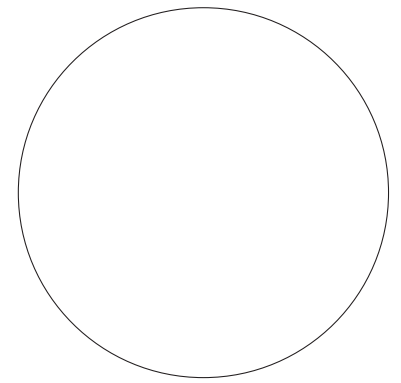
cm/inch

34/13,3



cm/inch

— Ø34/13,3 —



— Ø90/35,4 —



kettal

# Centre table

## Ø90

Designer  
Patricia Urquiola

Collection  
Roll

Reference  
KS2300600

2/3

### Materials

#### Aluminium

Antioxy, Heavy Load, Resistant  
En-1421, Kettalize-It, Anti-  
Scratch, Easy Clean, Flame  
Retardant M1, Eco Friendly  
Ecoembes Recycling Process

#### Marble

Antioxy, Mold resistant, Easy  
Clean, Restist U.V., X-Temperature

#### Teak

Teak A-Grade, Eco Friendly  
Oeko-Tek

#### Concrete

Restist U.V., X-Temperature,  
Stronj

### Maintenance

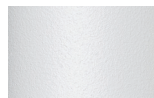
Clean with mild soap using  
sponge or cloth. Be gentle  
while cleaning, do not scrub  
aggressively the fabric. Once  
cleaned please make sure you  
remove soap excess.

In case of aggressive stains  
clean with diluted household  
bleach.

Clean stains promptly. The  
longer it remains, more difficult  
will be to remove.

Once cleaned the fabric steam  
iron the fabric. Just use steam,  
be carefull NOT placing the  
iron directly in the fabric it will  
get damage.

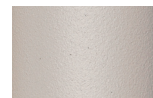
### Table Base Colour Options



Chalk  
721



Bone  
678



Tuff  
103



Mist  
773



Flint  
734



London Clay  
729



Mahogany  
100



Carbon  
737



Lilac  
104



Feldspar  
082



Sepia  
088



Terra Rossa  
087



Magma  
086



Terracota  
085



Sahara  
139



Camomile  
106



Aquamarine  
107



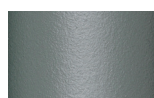
Cobalt  
089



Indigo  
094



Jade  
091



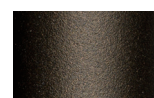
Onyx  
101



Juniper  
092



Amazon  
102



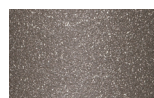
Bronze  
093



Corten  
727



Claystone  
741



Sand Storm  
132



Pumice  
131



Galena  
105



Manganese  
726

### Table Top Colour Options



Teak  
904



Marble  
079

### Other

# Centre table Ø90

Designer  
Patricia Urquiola


























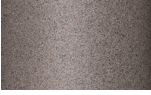




Collection  
Roll

Reference  
KS2300600

3/3


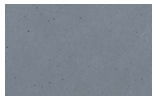


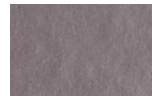



## Table Top Colour Options

## Terrain Paints

				
Chalk 721	Bone 678	Tuff 103	Mist 773	Flint 734
				
London Clay 729	Mahogany 100	Carbon 737	Lilac 104	Feldspar 082
				
Sepia 088	Terra Rossa 087	Magma 086	Terracota 085	Sahara 139
				
Camomile 106	Aquamarine 107	Cobalt 089	Indigo 094	Jade 091
				
Onyx 101	Juniper 092	Amazon 102	Bronze 093	Corten 727
				
Claystone 741	Sand Storm 132	Pumice 131	Galena 105	Manganese 726

## Table Top Colour Options

## Glaze Paints (for Glaze)

				
Dolomite 373	Indian Sapphire 371	Montana 377	Erinite 376	Black Diamond 374
				
Smoky Quartz 370	Jasper 375	Obsidian 372		