

Band
Club chair aluminium
by Patricia Urquiola

kettal

Club chair aluminium

Designer
Patricia Urquiola

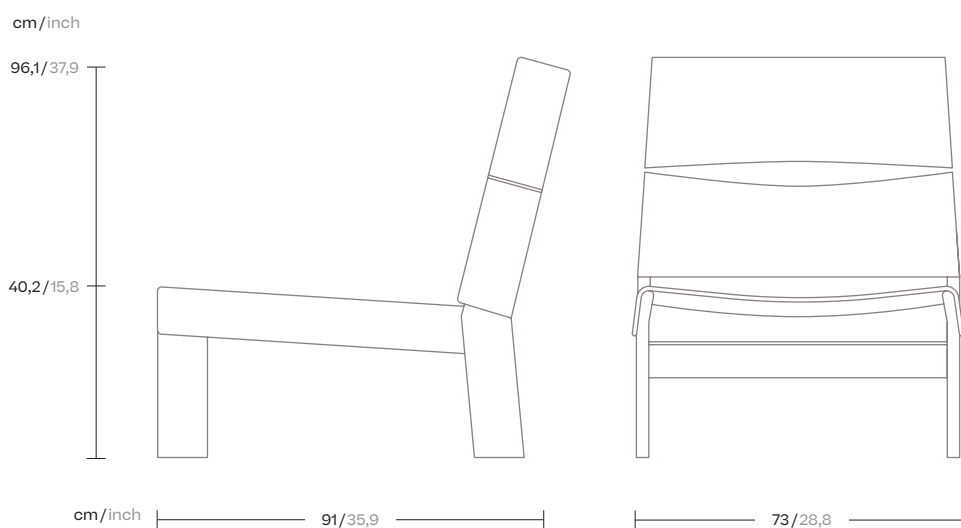
Collection
Band

Reference
KS2800500

1/4

The idea behind the BAND collection is the breakdown of structure. An object designed using an ensemble of pieces. The chair's design intentionally challenges the classic sophisticated lines of furniture design and becomes something schematic, a conceptual programme.

A structure made up of repetitive angular shapes that give centre stage to its raw materials, and can be formed entirely of aluminium or teak wood, and of Terrain Fabrics.



kettal

Club chair aluminium

Designer
Patricia Urquiola

Collection
Band

Reference
KS2800500

2/4

Materials

Aluminium

Antioxy, Heavy Load, Resistant
En-1421, Kettalize-It, Anti-
Scratch, Easy Clean, Flame
Retardant M1, Eco Friendly
Ecoembes Recycling Process

Terrain Elements

100% Fire Retardant Dyed
Acrylic, IMO FTP Code 2010
Part 8, Abrasion resistance
(Martindale) 60.000 cycles,
Fluorocarbon-free water
repellent finish Mildew, chlorine
and seawater resistant

Tonale Lino

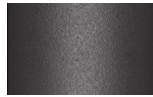
100% Solution Dyed Acrylic, Fire
retardant IMO FTP Code 2010
Part 8

Tonale Boucle

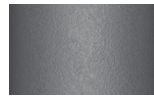
60% Solution Dyed Acrylic 40%
polyester Fire retardant IMO FTP
Code 2010 Part 8

Frame Colour Options

Terrain Coatings (for Aluminium)



Slate Stone
01C



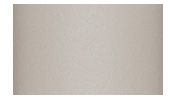
Mysty Smoke
02C



Ash
03C



Bone
04C



Tuff
05C



Wet Stone
06C



Sand Dune
07C



Dry Clay
08C



Arabica
09C



Sepia
19C



Rose Canyon
16C



Blossom
20C



Ruby Dust
18C



Sunset Glow
17C



Terrarosa
15C



Terracota
14C



Amber
13C



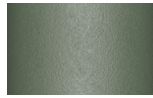
Ginger Root
12C



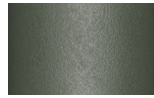
Desert Storm
11C



African Savannah
10C



Spring Meadow
28C



Kombu
29C



Forest Stream
27C



Sea Moss
26C



Glacier Ice
25C



Polar Sky
24C



Nightfall
23C



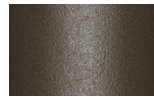
Indigo
22C



Wild Lupin
21C



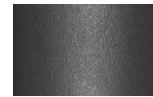
Galena
33C



Bronze
30C



Corten
31C



Manganese
32C

Club chair aluminium

Designer
Patricia Urquiola

Collection
Band

Reference
KS2800500

3/4

Maintenance

Clean with mild soap using sponge or cloth. Be gentle while cleaning, do not scrub aggressively the fabric. Once cleaned please make sure you remove soap excess.

In case of aggressive stains clean with diluted household bleach.

Clean stains promptly. The longer it remains, more difficult will be to remove.

Once cleaned the fabric steam iron the fabric. Just use steam, be carefull NOT placing the iron directly in the fabric it will get damage.

Seat Cushion

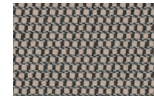
Terrain Laminate Elements



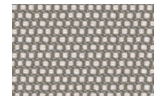
Charcoal
01L



Cumulus
02L



Fog
09L



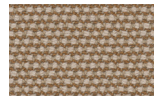
Porous Grey
08L



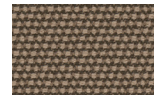
Snowcap
03L



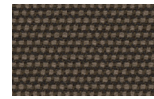
Moonstone
07L



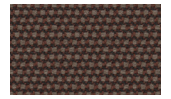
Karakum
06L



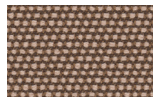
Cambium
12L



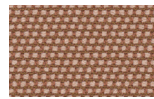
Raku
11L



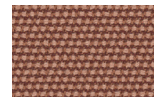
Clove
13L



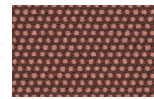
Desert Rose
14L



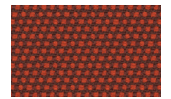
Pink Salt
15L



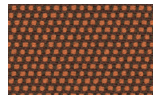
Pacific Dawn
16L



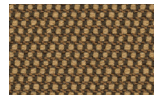
Acer
17L



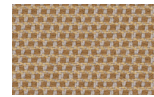
Firetail
18L



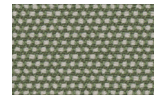
Glowing Ember
19L



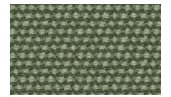
Tiger Eye
05L



Goldrush
04L



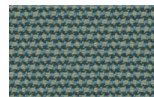
Sea Heart
22L



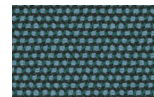
Heath
21L



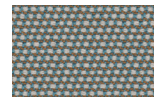
Peppercorn
20L



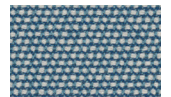
Rock Pool
23L



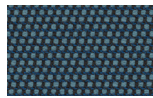
Tropic
24L



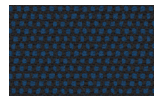
Skylark
25L



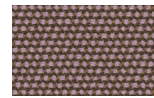
Nautica
26L



Blue Reef
27L



Cosmos
28L



Amethyst
29L

Club chair aluminium

Designer
Patricia Urquiola

Collection
Band

Reference
KS2800500

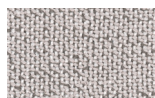
4/4

Seat/Back Cushion

Tonale Lino



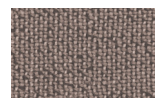
Alba
H51



Mist
H52



Mud Rain
H53



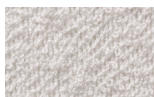
Haboob
H54



Sunstruck
H55

Seat/Back Cushion

Tonale Boucle



Alba
H01



Haboob
H02



Afterglow
H03



Sunstruck
H04



Aurora
H05



Storm
H06