



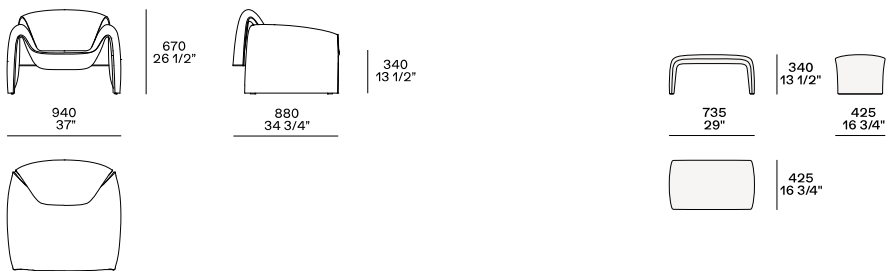
---

## DESCRIZIONE

<b>Tipologia</b>	Poltrona
<b>Struttura</b>	Acciaio con seduta sostenuta da cinghie elastiche e giunti di unione tra schienale e seduta in alluminio
<b>Seduta / Schienale</b>	Poliuretano flessibile stampato
<b>Rivestimento finale</b>	Tessuto o pelle non sfoderabile

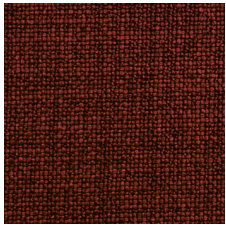
---

## DIMENSIONI

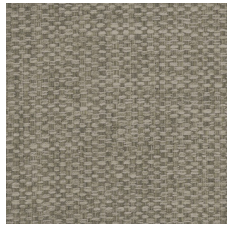


## FINITURE RIVESTIMENTO

### Tessuti



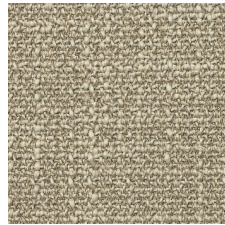
Caleo



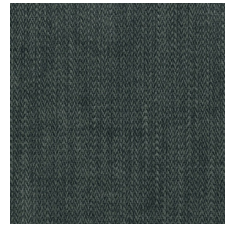
Chios



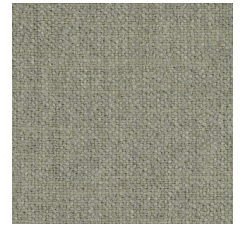
Eraclea



Antea



Itaca



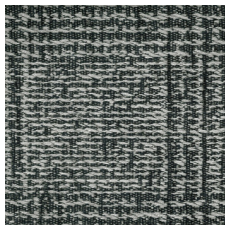
Kushiro



Micene



Rabat



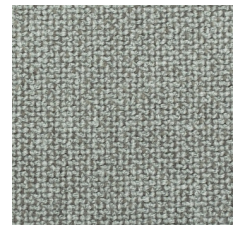
Sendai



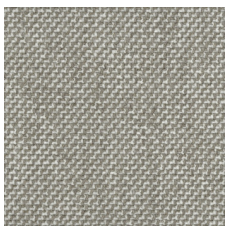
Sparta



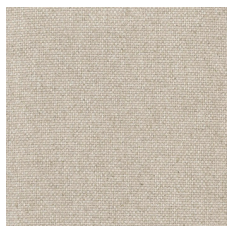
Agadir



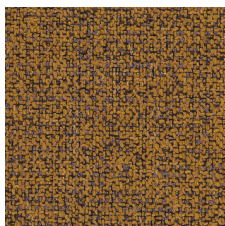
Arcadia



Argo



Hannover



Kitami



Naxos



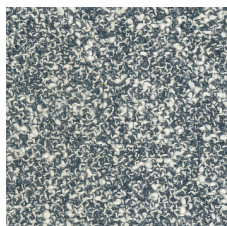
Nayoro



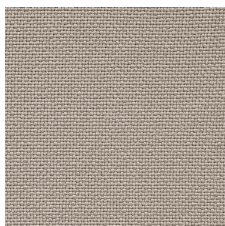
Orleans



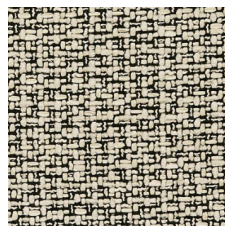
Skyros



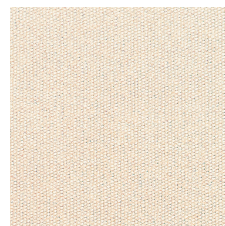
Brest



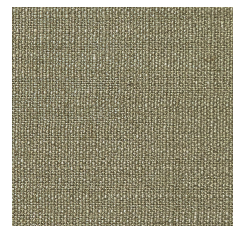
Norwich



Sheffield



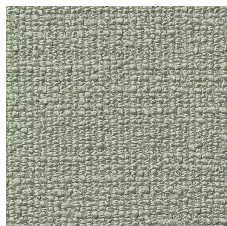
Irati



Kiala



Carson



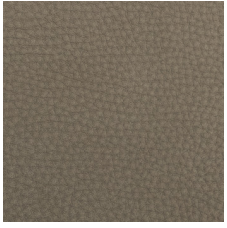
Komi



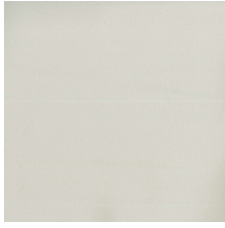
Molai

### Pelli





Silk



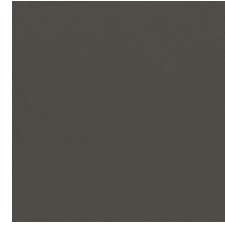
Special



Invecchiata



Nabuk



Soft