



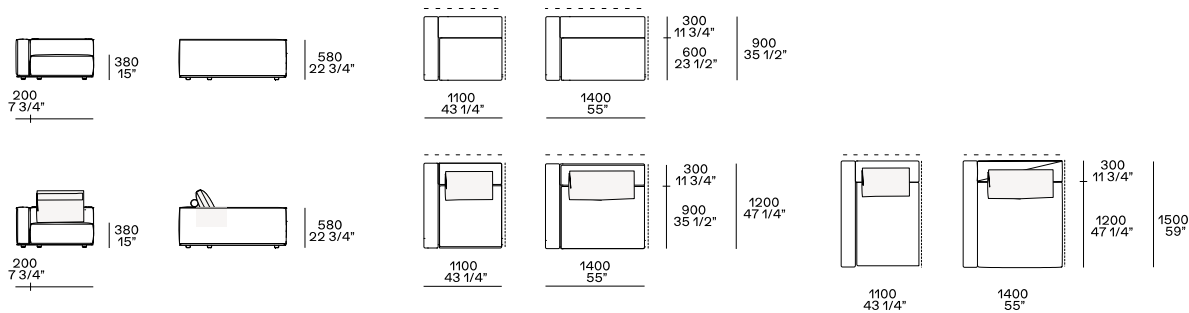
DESCRIZIONE

Tipologia	Divano componibile privo di giunzioni, liberamente aggregabile
Struttura	Legno e derivati
Cuscino schienale	Poliuretano espanso a quote differenziate
Rullo	Poliuretano espanso
Cuscino seduta	Poliuretano espanso a quote differenziate
Prerivestimento	Tela cotone e piuma
Rivestimento finale	Tessuto o pelle sfoderabile
Basamento	Pannello di fibra a media densità verniciato
Cuscini optional	Tela cotone e piuma

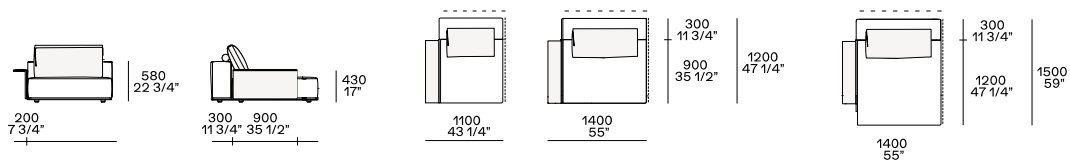
DIMENSIONI

Elementi componibili

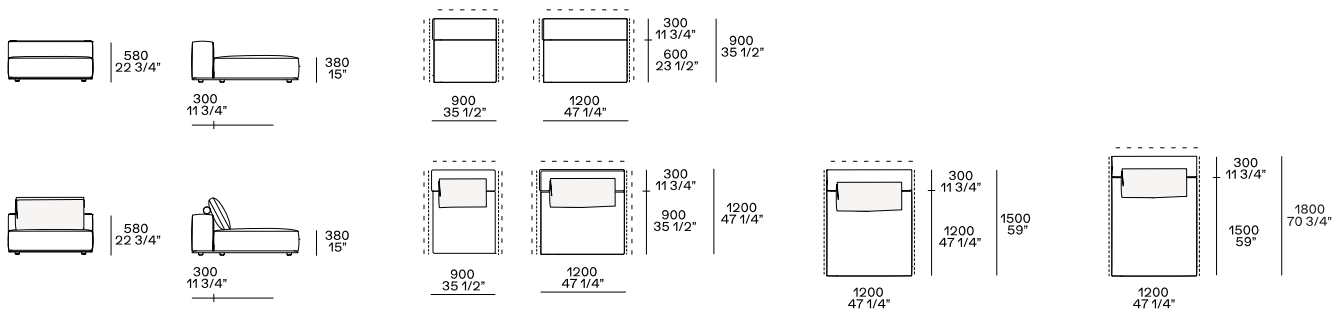
Terminale sx-dx



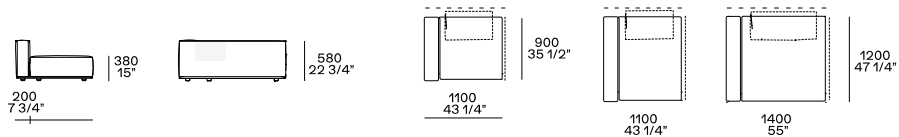
Terminale sx-dx con bracciolo Slim



Centrale

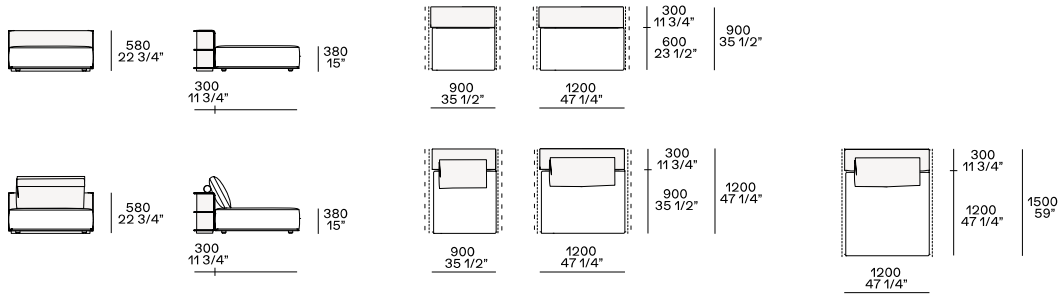


Terminale isola sx-dx

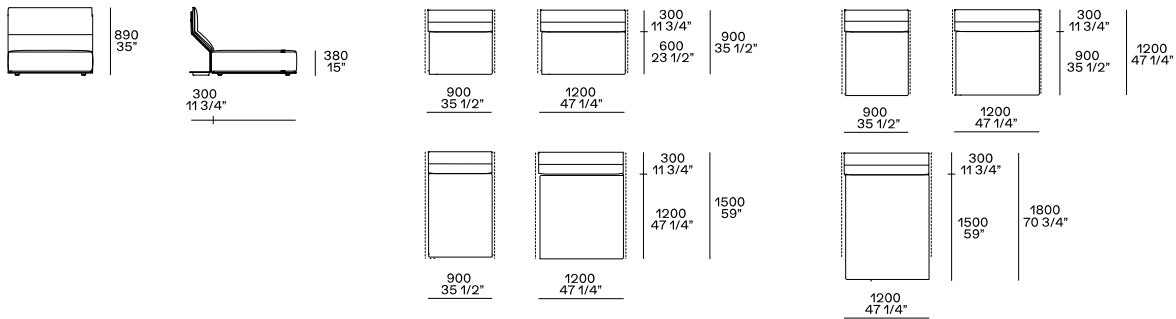


Nelle composizioni bifacciali i cuscini schienale sono appoggiati allo schienale dell'elemento retrostante

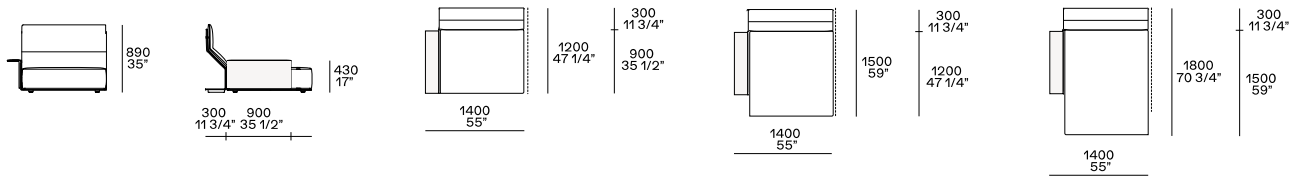
Centrale con schienale con mensola



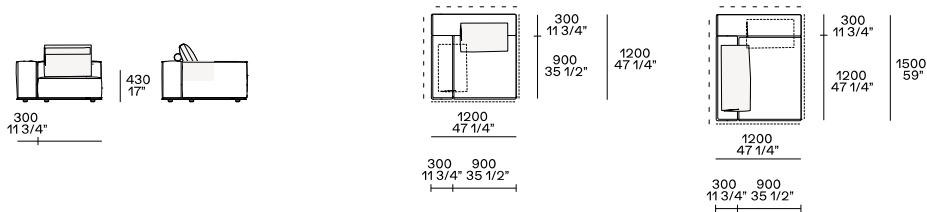
Chaise longue



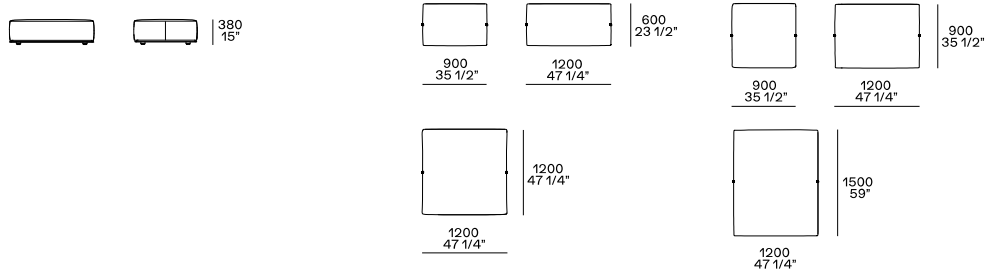
Chaise longue sx-dx con bracciolo Slim



Angolo sx-dx

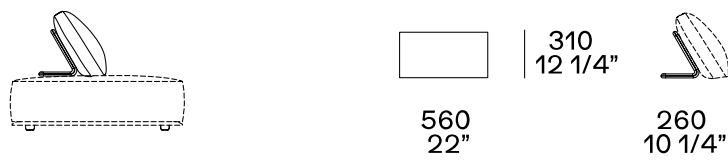


Pouf



Usò terminale, centrale, angolare e bifacciale su tutti i lati tranne che per il modulo 1200x600 componibile in bifacciale solo su lato lungo

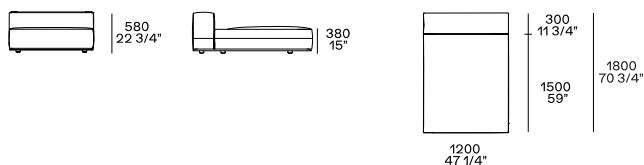
Schienale mobile



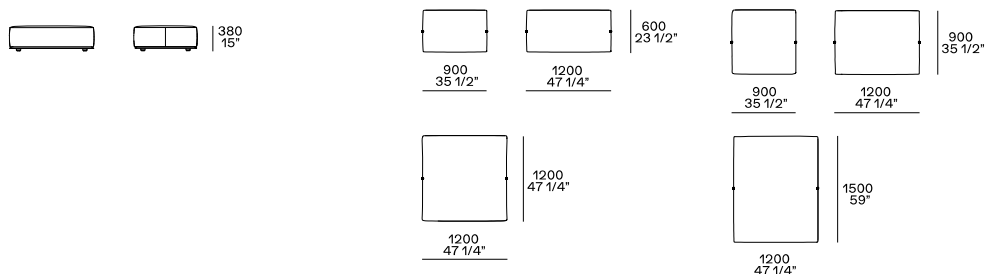
Utilizzabile solo su pouf

Elementi freestanding

Chaise longue

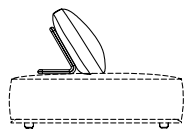


Pouf



Usò terminale, centrale, angolare e bifacciale su tutti i lati tranne che per il modulo 1200x600 componibile in bifacciale solo su lato lungo

Schienale mobile



560
22"

310
12 1/4"

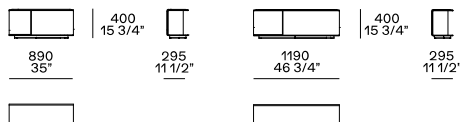


260
10 1/4"

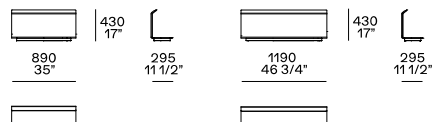
Utilizzabile solo su pouf

Elementi retro divano

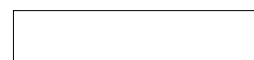
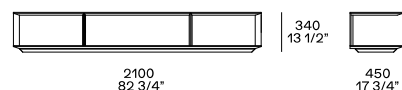
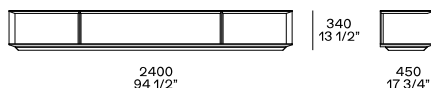
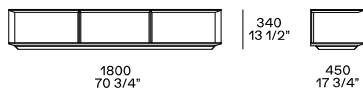
Elemento retro divano con mensola



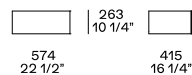
Elemento retro divano con vano a giorno



Tavolino retro divano

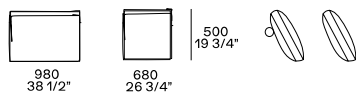


Cassetto opzionale



Cuscini

Cuscini schienale con o senza rullo Ø 90

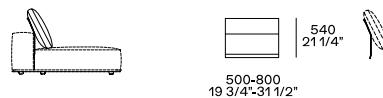


Larghezza 680-980 da abbinare in base alla larghezza degli schienali

Cuscino opzionale comfort

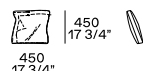


Poggiatesta



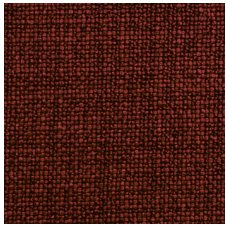
Non utilizzabile su pouf, chaise longue, elemento con mensola

Cuscino opzionale a fascia

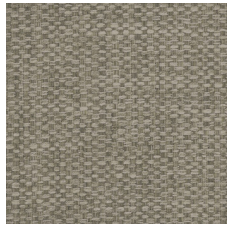


FINITURE RIVESTIMENTO

Tessuti



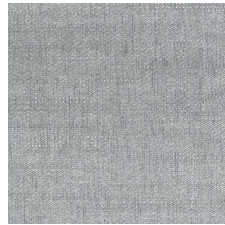
Caleo



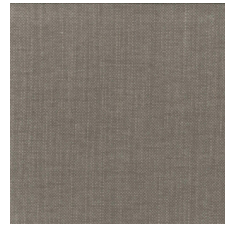
Chios



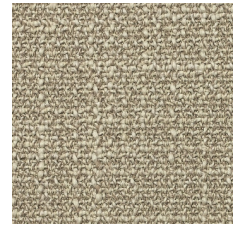
Eraclea



Lima



Siviglia



Antea



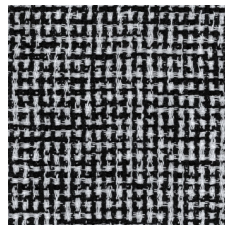
Corinto



Kushiro



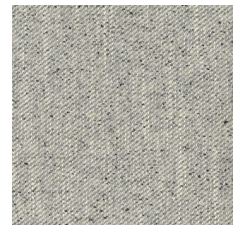
Micene



Milos



Olimpia



Oxford



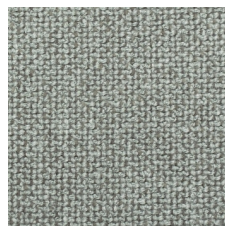
Rabat



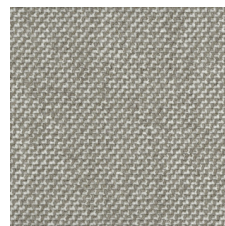
Sparta



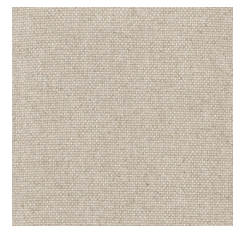
Agadir



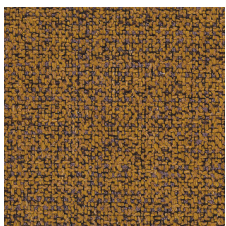
Arcadia



Argo



Hannover



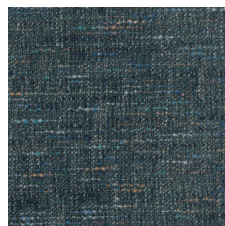
Kitami



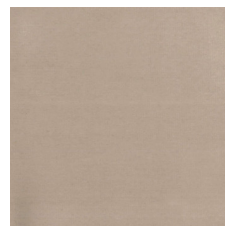
Naxos



Nayoro



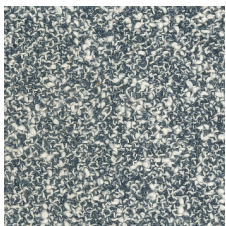
Orleans



Persia



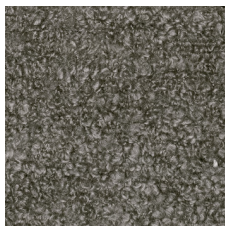
Skyros



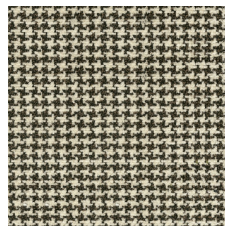
Brest



Glasgow



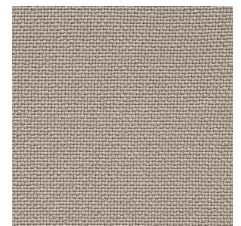
Lero



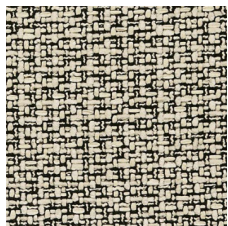
Nancy



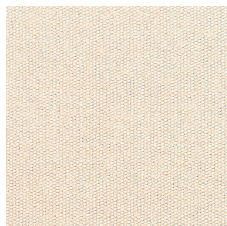
Siro



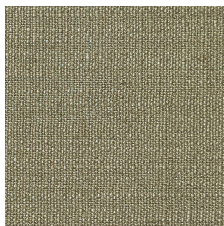
Norwich



Sheffield



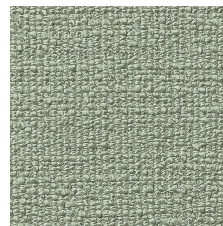
Irati



Kiala



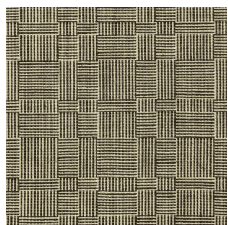
Carson



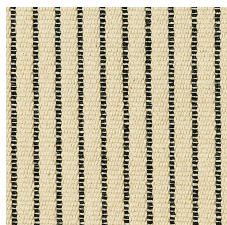
Komi



Molai



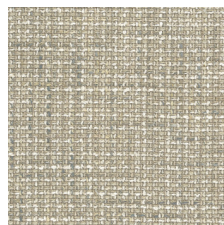
Janaki



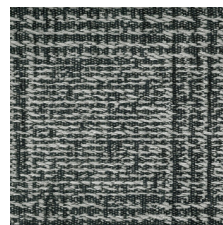
Yushan



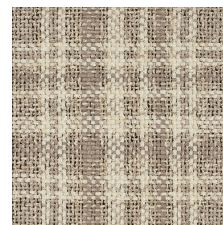
Itaca



Lipsi



Sendai



Dundee



Tebe

Pelli



Spring



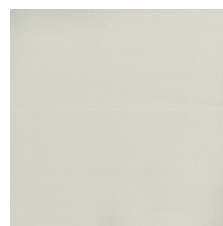
Colors



Silk



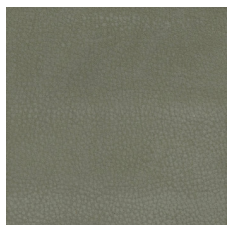
Deep



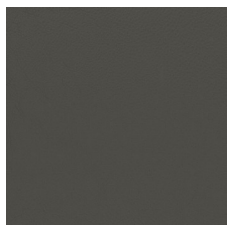
Special



Invecchiata



Nabuk



Soft

FINITURE BASAMENTO

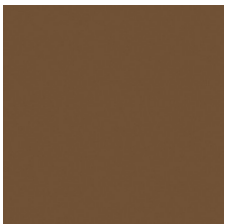
Parti metalliche



Parti metalliche

FINITURE RIVESTIMENTO ELEMENTI RETRO DIVANO, CHAISE LONGUE, SCHIENALE CON MENSOLA E BRACCIOLO SLIM

Cuoio



Cuoio