

Grand Bitta,  
2 Seater sofa  
by Rodolfo Dordoni

**kettal**

# 2 Seater sofa

Designer  
Rodolfo Dordoni

Collection  
Grand Bitta

Reference  
KS7003100

1/4

Grand Bitta is characterized by a combination of aluminum and teak legs, seats of braided polyester and comfortable cushions, with teak or stone table tops - all while using all waterproof materials.

cm/inch

63/24,8

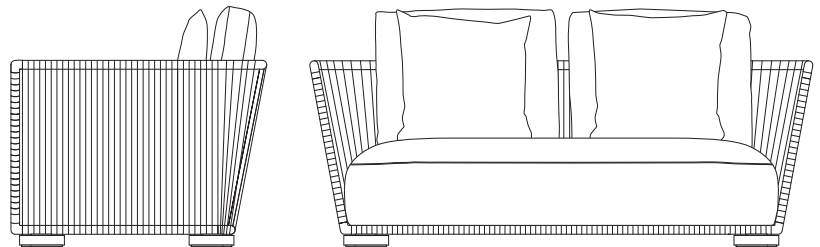
26/10,2

6/2,3

cm/inch

89/35,03

175/68,8



kettal

# 2 Seater sofa

Designer  
Rodolfo Dordoni

Collection  
Grand Bitta

Reference  
KS7003100

2/4

## Materials

### Aluminium

Antioxy, Heavy Load, Resistant  
En-1421, Kettalize-It, Anti-  
Scratch, Easy Clean, Flame  
Retardant M1, Eco Friendly  
Ecoembes Recycling Process

### Rope

Antioxy, Resist UV, En-581-4, Easy  
Clean

### Wood (Teak / Iroko)

### Terrain Elements

100% Fire Retardant Dyed  
Acrylic, IMO FTP Code 2010  
Part 8, Abrasion resistance  
(Martindale) 60.000 cycles,  
Fluorocarbon-free water  
repellent finish Mildew, chlorine  
and seawater resistant

### Tonale Lino

100% Solution Dyed Acrylic, Fire  
retardant IMO FTP Code 2010  
Part 8

### Tonale Boucle

60% Solution Dyed Acrylic 40%  
polyester Fire retardant IMO FTP  
Code 2010 Part 8

### Piping

## Legs Colour Options



Teak



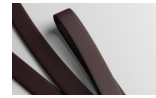
Iroko

## Wood

## Piping Colour



Rosmary  
MR1



Whole Clove  
MR2



Mustard Grain  
MR3



Sea Salt  
MR4



Ground Pepper  
MR5



Black Salt  
MR6



Poppy Seed  
MR7



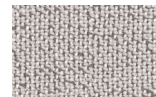
Rose Harissa  
MR8

## Piping

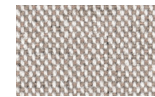
## Seat/Back Cushion



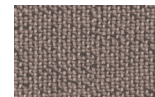
Alba  
51L-51T



Mist  
52L-52T



Mud Rain  
53L-53T



Haboob  
54L-54T



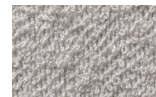
Sunstruck  
55L-55T

## Tonale Lino

## Seat/Back Cushion



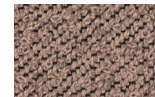
Alba  
71L-71T



Mist  
77L-77T



Haboob  
72L-72T

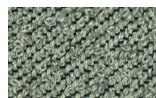


Afterglow  
73L-73T



Sunstruck  
74L-74T

## Tonale Boucle



Aurora  
75L-75T



Storm  
76L-76T

# 2 Seater sofa

Designer  
Rodolfo Dordoni

Collection  
Grand Bitta

Reference  
KS7003100

3/4

## Maintenance

Clean with mild soap using sponge or cloth. Be gentle while cleaning, do not scrub aggressively the fabric. Once cleaned please make sure you remove soap excess.

In case of aggressive stains clean with diluted household bleach.

Clean stains promptly. The longer it remains, more difficult will be to remove.

Once cleaned the fabric steam iron the fabric. Just use steam, be carefull NOT placing the iron directly in the fabric it will get damage.

## Seat/Back Cushion

## Terrain Laminate Elements



Charcoal  
01L



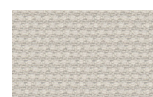
Cumulus  
02L



Fog  
09L



Porous Grey  
08L



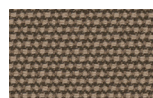
Snowcap  
03L



Moonstone  
07L



Karakum  
06L



Cambium  
12L



Raku  
11L



Clove  
13L



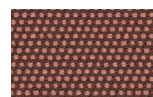
Desert Rose  
14L



Pink Salt  
15L



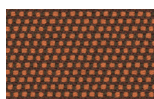
Pacific Dawn  
16L



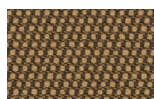
Acer  
17L



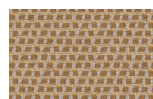
Firetail  
18L



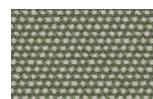
Glowing Ember  
19L



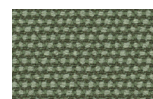
Tiger Eye  
05L



Goldrush  
04L



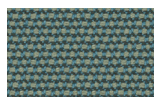
Sea Heart  
22L



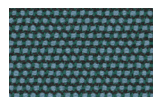
Heath  
21L



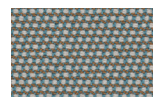
Peppercorn  
20L



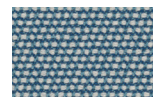
Rock Pool  
23L



Tropic  
24L



Skylark  
25L



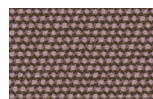
Nautica  
26L



Blue Reef  
27L



Cosmos  
28L



Amethyst  
29L



# 2 Seater sofa

Designer  
Rodolfo Dordoni

Collection  
Grand Bitta

Reference  
KS7003100

4/4

## Rope Colour Options

## Bela Rope



Basalt  
Z01



Shore Line  
Z02



Nimbus  
Z03



Polar White  
Z04



Dry Vine  
Z05



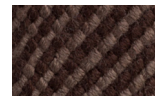
Reed  
Z06



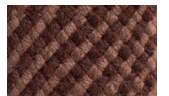
Dusk  
Z07



Riverbed  
Z08



Terra Firma  
Z09



Chesnut  
Z10



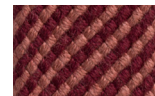
Black Cacao  
Z14



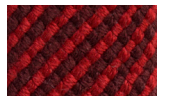
Gypsum  
Z11



Dragon Tree  
Z12



Sumac  
Z13



Madder Root  
Z15



Red Mud  
Z16



Turmeric  
Z19



Champa  
Z20



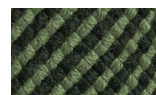
Charoli  
Z18



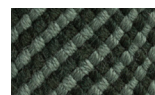
Tamarind  
Z17



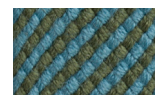
Bitter Gourd  
Z21



Foliar  
Z22



Evergreen  
Z23



Sea Grass  
Z25



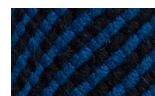
Teal  
Z24



Azur  
Z28



Blue Slate  
Z29



Midnight  
Z30



Lavandin  
Z27



Tree Top  
Z26

Grand Bitta,  
3 Seater sofa  
by Rodolfo Dordoni

**kettal**

# 3 Seater sofa

Designer  
Rodolfo Dordoni

Collection  
Grand Bitta

Reference  
KS7003200

1/4

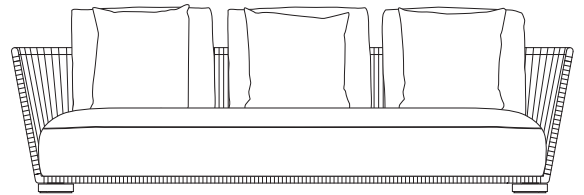
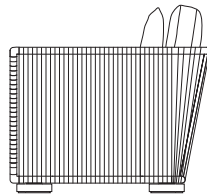
Grand Bitta is characterized by a combination of aluminum and teak legs, seats of braided polyester and comfortable cushions, with teak or stone table tops - all while using all waterproof materials.

cm/inch

63/24,8

26/10,2

6/2,3



cm/inch

89/35,03

150/98,4



kettal

# 3 Seater sofa

Designer  
Rodolfo Dordoni

Collection  
Grand Bitta

Reference  
KS7003200

2/4

## Materials

### Aluminium

Antioxy, Heavy Load, Resistant  
En-1421, Kettalize-It, Anti-  
Scratch, Easy Clean, Flame  
Retardant M1, Eco Friendly  
Ecoembes Recycling Process

### Rope

Antioxy, Resist UV, En-581-4, Easy  
Clean

### Wood (Teak / Iroko)

### Terrain Elements

100% Fire Retardant Dyed  
Acrylic, IMO FTP Code 2010  
Part 8, Abrasion resistance  
(Martindale) 60.000 cycles,  
Fluorocarbon-free water  
repellent finish Mildew, chlorine  
and seawater resistant

### Tonale Lino

100% Solution Dyed Acrylic, Fire  
retardant IMO FTP Code 2010  
Part 8

### Tonale Boucle

60% Solution Dyed Acrylic 40%  
polyester Fire retardant IMO FTP  
Code 2010 Part 8

### Piping

## Legs Colour Options



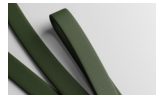
Teak



Iroko

## Wood

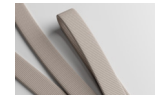
## Piping Colour



Rosmary  
MR1



Whole Clove  
MR2



Mustard Grain  
MR3



Sea Salt  
MR4



Ground Pepper  
MR5



Black Salt  
MR6



Poppy Seed  
MR7



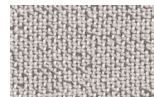
Rose Harissa  
MR8

## Piping

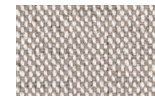
## Seat/Back Cushion



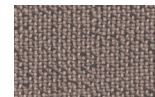
Alba  
51L-51T



Mist  
52L-52T



Mud Rain  
53L-53T



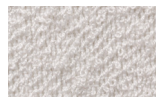
Haboob  
54L-54T



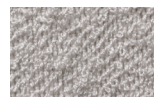
Sunstruck  
55L-55T

## Tonale Lino

## Seat/Back Cushion



Alba  
71L-71T



Mist  
77L-77T



Haboob  
72L-72T

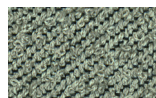


Afterglow  
73L-73T



Sunstruck  
74L-74T

## Tonale Boucle



Aurora  
75L-75T



Storm  
76L-76T

# 3 Seater sofa

Designer  
Rodolfo Dordoni

Collection  
Grand Bitta

Reference  
KS7003200

3/4

## Maintenance

Clean with mild soap using sponge or cloth. Be gentle while cleaning, do not scrub aggressively the fabric. Once cleaned please make sure you remove soap excess.

In case of aggressive stains clean with diluted household bleach.

Clean stains promptly. The longer it remains, more difficult will be to remove.

Once cleaned the fabric steam iron the fabric. Just use steam, be carefull NOT placing the iron directly in the fabric it will get damage.

## Seat/Back Cushion

## Terrain Laminate Elements



Charcoal  
01L



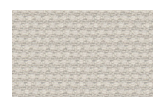
Cumulus  
02L



Fog  
09L



Porous Grey  
08L



Snowcap  
03L



Moonstone  
07L



Karakum  
06L



Cambium  
12L



Raku  
11L



Clove  
13L



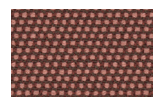
Desert Rose  
14L



Pink Salt  
15L



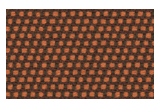
Pacific Dawn  
16L



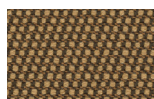
Acer  
17L



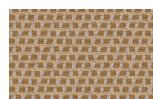
Firetail  
18L



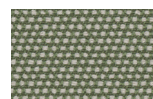
Glowing Ember  
19L



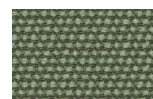
Tiger Eye  
05L



Goldrush  
04L



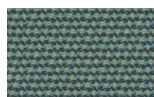
Sea Heart  
22L



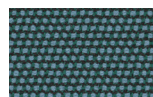
Heath  
21L



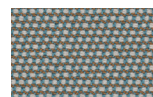
Peppercorn  
20L



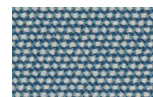
Rock Pool  
23L



Tropic  
24L



Skylark  
25L



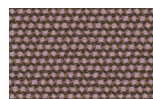
Nautica  
26L



Blue Reef  
27L



Cosmos  
28L



Amethyst  
29L



# 3 Seater sofa

Designer  
Rodolfo Dordoni

Collection  
Grand Bitta

Reference  
KS7003200

4/4

## Rope Colour Options

## Bela Rope



Basalt  
Z01



Shore Line  
Z02



Nimbus  
Z03



Polar White  
Z04



Dry Vine  
Z05



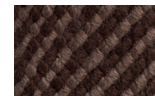
Reed  
Z06



Dusk  
Z07



Riverbed  
Z08



Terra Firma  
Z09



Chesnut  
Z10



Black Cacao  
Z14



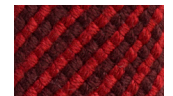
Gypsum  
Z11



Dragon Tree  
Z12



Sumac  
Z13



Madder Root  
Z15



Red Mud  
Z16



Turmeric  
Z19



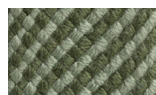
Champa  
Z20



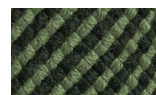
Charoli  
Z18



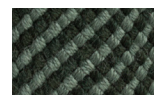
Tamarind  
Z17



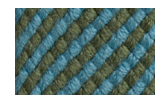
Bitter Gourd  
Z21



Foliar  
Z22



Evergreen  
Z23



Sea Grass  
Z25



Teal  
Z24



Azur  
Z28



Blue Slate  
Z29



Midnight  
Z30



Lavandin  
Z27



Tree Top  
Z26



Grand Bitta,  
Left corner module  
by Rodolfo Dordoni

**kettal**

# Left corner module

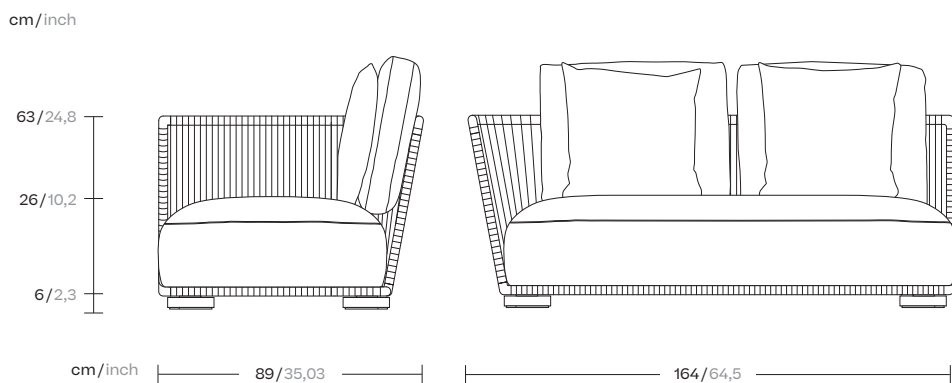
Designer  
Rodolfo Dordoni

Collection  
Grand Bitta

Reference  
KS7003300

1/4

Grand Bitta is characterized by a combination of aluminum and teak legs, seats of braided polyester and comfortable cushions, with teak or stone table tops - all while using all waterproof materials.



kettal

# Left corner module

Designer  
Rodolfo Dordoni

Collection  
Grand Bitta

Reference  
KS7003300

2/4

## Materials

### Aluminium

Antioxy, Heavy Load, Resistant  
En-1421, Kettalize-It, Anti-  
Scratch, Easy Clean, Flame  
Retardant M1, Eco Friendly  
Ecoembes Recycling Process

### Rope

Antioxy, Resist UV, En-581-4, Easy  
Clean

### Wood (Teak / Iroko)

### Terrain Elements

100% Fire Retardant Dyed  
Acrylic, IMO FTP Code 2010  
Part 8, Abrasion resistance  
(Martindale) 60.000 cycles,  
Fluorocarbon-free water  
repellent finish Mildew, chlorine  
and seawater resistant

### Tonale Lino

100% Solution Dyed Acrylic, Fire  
retardant IMO FTP Code 2010  
Part 8

### Tonale Boucle

60% Solution Dyed Acrylic 40%  
polyester Fire retardant IMO FTP  
Code 2010 Part 8

### Piping

## Legs Colour Options



Teak



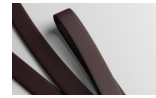
Iroko

## Wood

## Piping Colour



Rosmary  
MR1



Whole Clove  
MR2



Mustard Grain  
MR3



Sea Salt  
MR4



Ground Pepper  
MR5



Black Salt  
MR6



Poppy Seed  
MR7



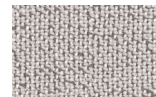
Rose Harissa  
MR8

## Piping

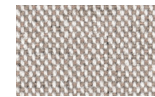
## Seat/Back Cushion



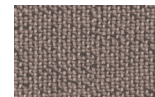
Alba  
51L-51T



Mist  
52L-52T



Mud Rain  
53L-53T



Haboob  
54L-54T



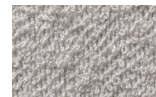
Sunstruck  
55L-55T

## Tonale Lino

## Seat/Back Cushion



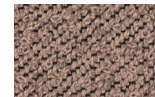
Alba  
71L-71T



Mist  
77L-77T



Haboob  
72L-72T

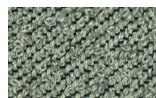


Afterglow  
73L-73T



Sunstruck  
74L-74T

## Tonale Boucle



Aurora  
75L-75T



Storm  
76L-76T

# Left corner module

Designer  
Rodolfo Dordoni

Collection  
Grand Bitta

Reference  
KS7003300

3/4

## Maintenance

Clean with mild soap using sponge or cloth. Be gentle while cleaning, do not scrub aggressively the fabric. Once cleaned please make sure you remove soap excess.

In case of aggressive stains clean with diluted household bleach.

Clean stains promptly. The longer it remains, more difficult will be to remove.

Once cleaned the fabric steam iron the fabric. Just use steam, be carefull NOT placing the iron directly in the fabric it will get damage.

## Seat/Back Cushion

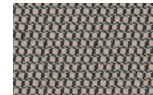
## Terrain Laminate Elements



Charcoal  
01L



Cumulus  
02L



Fog  
09L



Porous Grey  
08L



Snowcap  
03L



Moonstone  
07L



Karakum  
06L



Cambium  
12L



Raku  
11L



Clove  
13L



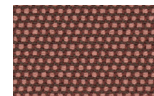
Desert Rose  
14L



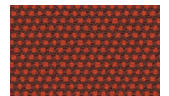
Pink Salt  
15L



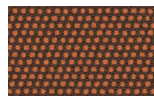
Pacific Dawn  
16L



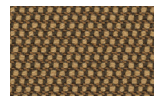
Acer  
17L



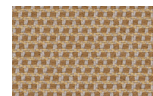
Firetail  
18L



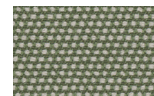
Glowing Ember  
19L



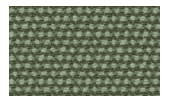
Tiger Eye  
05L



Goldrush  
04L



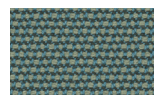
Sea Heart  
22L



Heath  
21L



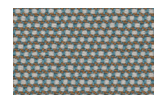
Peppercorn  
20L



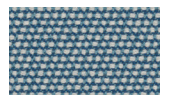
Rock Pool  
23L



Tropic  
24L



Skylark  
25L



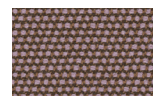
Nautica  
26L



Blue Reef  
27L



Cosmos  
28L



Amethyst  
29L

# Left corner module

Designer  
Rodolfo Dordoni

Collection  
Grand Bitta

Reference  
KS7003300

4/4

## Rope Colour Options

## Bela Rope



Basalt  
Z01



Shore Line  
Z02



Nimbus  
Z03



Polar White  
Z04



Dry Vine  
Z05



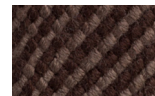
Reed  
Z06



Dusk  
Z07



Riverbed  
Z08



Terra Firma  
Z09



Chesnut  
Z10



Black Cacao  
Z14



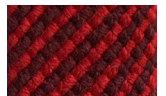
Gypsum  
Z11



Dragon Tree  
Z12



Sumac  
Z13



Madder Root  
Z15



Red Mud  
Z16



Turmeric  
Z19



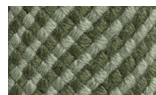
Champa  
Z20



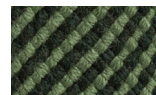
Charoli  
Z18



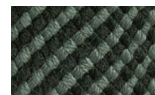
Tamarind  
Z17



Bitter Gourd  
Z21



Foliar  
Z22



Evergreen  
Z23



Sea Grass  
Z25



Teal  
Z24



Azur  
Z28



Blue Slate  
Z29



Midnight  
Z30



Lavandin  
Z27



Tree Top  
Z26

Grand Bitta,  
Right corner module  
by Rodolfo Dordoni

**kettal**



# Right corner module

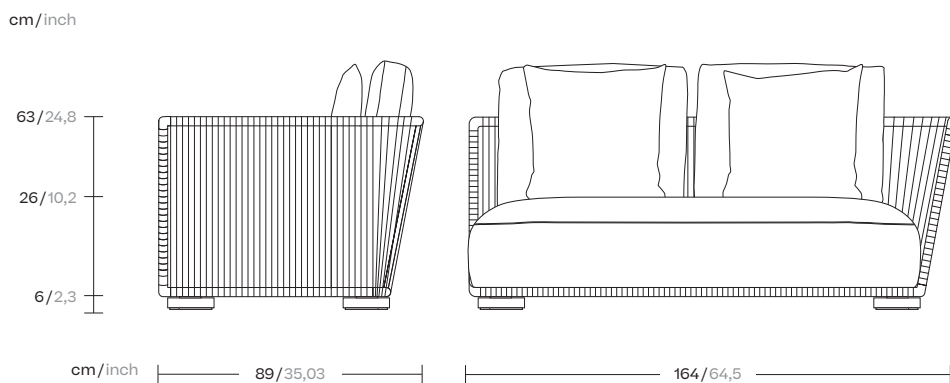
Designer  
Rodolfo Dordoni

Collection  
Grand Bitta

Reference  
KS7003400

1/4

Grand Bitta is characterized by a combination of aluminum and teak legs, seats of braided polyester and comfortable cushions, with teak or stone table tops - all while using all waterproof materials.



kettal

# Right corner module

Designer  
Rodolfo Dordoni

Collection  
Grand Bitta

Reference  
KS7003400

2/4

## Materials

### Aluminium

Antioxy, Heavy Load, Resistant  
En-1421, Kettalize-It, Anti-  
Scratch, Easy Clean, Flame  
Retardant M1, Eco Friendly  
Ecoembes Recycling Process

### Rope

Antioxy, Resist UV, En-581-4, Easy  
Clean

### Wood (Teak / Iroko)

### Terrain Elements

100% Fire Retardant Dyed  
Acrylic, IMO FTP Code 2010  
Part 8, Abrasion resistance  
(Martindale) 60.000 cycles,  
Fluorocarbon-free water  
repellent finish Mildew, chlorine  
and seawater resistant

### Tonale Lino

100% Solution Dyed Acrylic, Fire  
retardant IMO FTP Code 2010  
Part 8

### Tonale Boucle

60% Solution Dyed Acrylic 40%  
polyester Fire retardant IMO FTP  
Code 2010 Part 8

### Piping

## Legs Colour Options



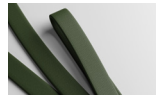
Teak



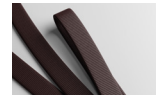
Iroko

## Wood

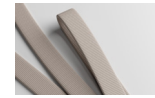
## Piping Colour



Rosmary  
MR1



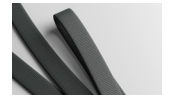
Whole Clove  
MR2



Mustard Grain  
MR3



Sea Salt  
MR4



Ground Pepper  
MR5



Black Salt  
MR6



Poppy Seed  
MR7



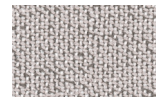
Rose Harissa  
MR8

## Piping

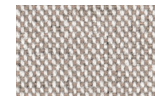
## Seat/Back Cushion



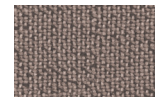
Alba  
51L-51T



Mist  
52L-52T



Mud Rain  
53L-53T



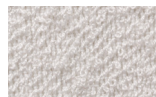
Haboob  
54L-54T



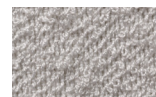
Sunstruck  
55L-55T

## Tonale Lino

## Seat/Back Cushion



Alba  
71L-71T



Mist  
77L-77T



Haboob  
72L-72T



Afterglow  
73L-73T



Sunstruck  
74L-74T

## Tonale Boucle



Aurora  
75L-75T



Storm  
76L-76T

# Right corner module

Designer  
Rodolfo Dordoni

Collection  
Grand Bitta

Reference  
KS7003400

3/4

## Maintenance

Clean with mild soap using sponge or cloth. Be gentle while cleaning, do not scrub aggressively the fabric. Once cleaned please make sure you remove soap excess.

In case of aggressive stains clean with diluted household bleach.

Clean stains promptly. The longer it remains, more difficult will be to remove.

Once cleaned the fabric steam iron the fabric. Just use steam, be carefull NOT placing the iron directly in the fabric it will get damage.

## Seat/Back Cushion

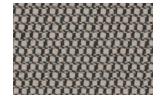
## Terrain Laminate Elements



Charcoal  
01L



Cumulus  
02L



Fog  
09L



Porous Grey  
08L



Snowcap  
03L



Moonstone  
07L



Karakum  
06L



Cambium  
12L



Raku  
11L



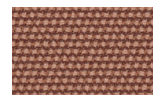
Clove  
13L



Desert Rose  
14L



Pink Salt  
15L



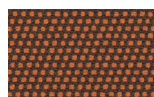
Pacific Dawn  
16L



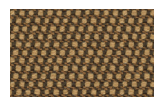
Acer  
17L



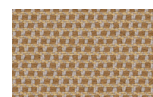
Firetail  
18L



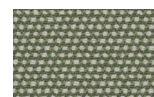
Glowing Ember  
19L



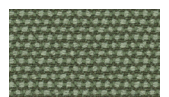
Tiger Eye  
05L



Goldrush  
04L



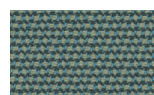
Sea Heart  
22L



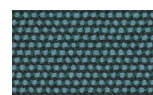
Heath  
21L



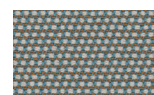
Peppercorn  
20L



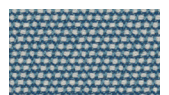
Rock Pool  
23L



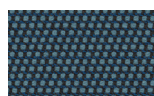
Tropic  
24L



Skylark  
25L



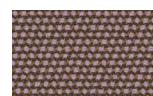
Nautica  
26L



Blue Reef  
27L



Cosmos  
28L



Amethyst  
29L

# Right corner module

Designer  
Rodolfo Dordoni

Collection  
Grand Bitta

Reference  
KS7003400

4/4

## Rope Colour Options

## Bela Rope



Basalt  
Z01



Shore Line  
Z02



Nimbus  
Z03



Polar White  
Z04



Dry Vine  
Z05



Reed  
Z06



Dusk  
Z07



Riverbed  
Z08



Terra Firma  
Z09



Chesnut  
Z10



Black Cacao  
Z14



Gypsum  
Z11



Dragon Tree  
Z12



Sumac  
Z13



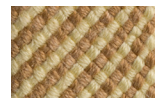
Madder Root  
Z15



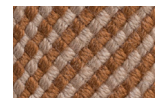
Red Mud  
Z16



Turmeric  
Z19



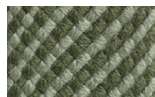
Champa  
Z20



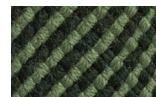
Charoli  
Z18



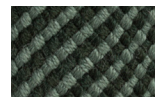
Tamarind  
Z17



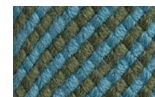
Bitter Gourd  
Z21



Foliar  
Z22



Evergreen  
Z23



Sea Grass  
Z25



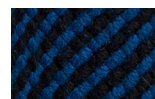
Teal  
Z24



Azur  
Z28



Blue Slate  
Z29



Midnight  
Z30



Lavandin  
Z27



Tree Top  
Z26

Grand Bitta,  
Right corner module  
by Rodolfo Dordoni

**kettal**



# Central module

Designer  
Rodolfo Dordoni

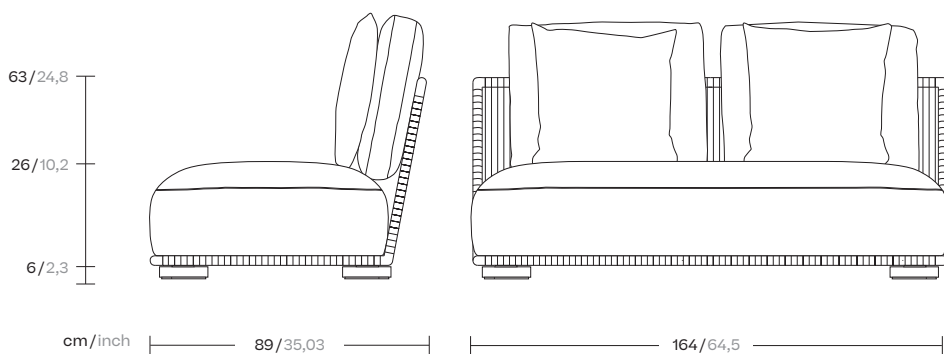
Collection  
Grand Bitta

Reference  
KS7003500

1/4

Grand Bitta is characterized by a combination of aluminum and teak legs, seats of braided polyester and comfortable cushions, with teak or stone table tops - all while using all waterproof materials.

cm/inch



kettal



# Central module

Designer  
Rodolfo Dordoni

Collection  
Grand Bitta

Reference  
KS7003500

2/4

## Materials

### Aluminium

Antioxy, Heavy Load, Resistant  
En-1421, Kettalize-It, Anti-  
Scratch, Easy Clean, Flame  
Retardant M1, Eco Friendly  
Ecoembes Recycling Process

### Rope

Antioxy, Resist UV, En-581-4, Easy  
Clean

### Wood (Teak / Iroko)

### Terrain Elements

100% Fire Retardant Dyed  
Acrylic, IMO FTP Code 2010  
Part 8, Abrasion resistance  
(Martindale) 60.000 cycles,  
Fluorocarbon-free water  
repellent finish Mildew, chlorine  
and seawater resistant

### Tonale Lino

100% Solution Dyed Acrylic, Fire  
retardant IMO FTP Code 2010  
Part 8

### Tonale Boucle

60% Solution Dyed Acrylic 40%  
polyester Fire retardant IMO FTP  
Code 2010 Part 8

### Piping

## Legs Colour Options



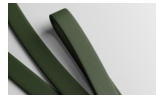
Teak



Iroko

## Wood

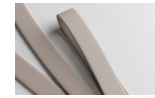
## Piping Colour



Rosmary  
MR1



Whole Clove  
MR2



Mustard Grain  
MR3



Sea Salt  
MR4



Ground Pepper  
MR5



Black Salt  
MR6



Poppy Seed  
MR7



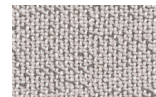
Rose Harissa  
MR8

## Piping

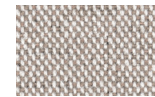
## Seat/Back Cushion



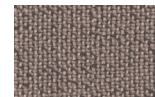
Alba  
51L-51T



Mist  
52L-52T



Mud Rain  
53L-53T



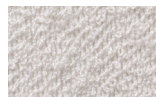
Haboob  
54L-54T



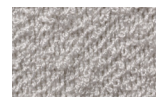
Sunstruck  
55L-55T

## Tonale Lino

## Seat/Back Cushion



Alba  
71L-71T



Mist  
77L-77T



Haboob  
72L-72T



Afterglow  
73L-73T



Sunstruck  
74L-74T

## Tonale Boucle



Aurora  
75L-75T



Storm  
76L-76T

# Central module

Designer  
Rodolfo Dordoni

Collection  
Grand Bitta

Reference  
KS7003500

3/4

## Maintenance

Clean with mild soap using sponge or cloth. Be gentle while cleaning, do not scrub aggressively the fabric. Once cleaned please make sure you remove soap excess.

In case of aggressive stains clean with diluted household bleach.

Clean stains promptly. The longer it remains, more difficult will be to remove.

Once cleaned the fabric steam iron the fabric. Just use steam, be carefull NOT placing the iron directly in the fabric it will get damage.

## Seat/Back Cushion

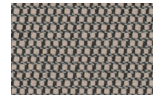
## Terrain Laminate Elements



Charcoal  
01L



Cumulus  
02L



Fog  
09L



Porous Grey  
08L



Snowcap  
03L



Moonstone  
07L



Karakum  
06L



Cambium  
12L



Raku  
11L



Clove  
13L



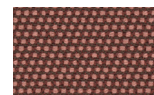
Desert Rose  
14L



Pink Salt  
15L



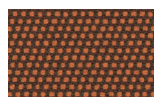
Pacific Dawn  
16L



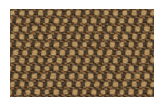
Acer  
17L



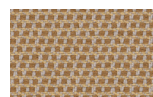
Firetail  
18L



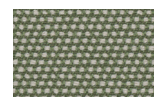
Glowing Ember  
19L



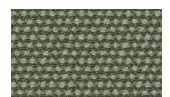
Tiger Eye  
05L



Goldrush  
04L



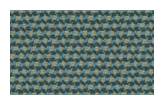
Sea Heart  
22L



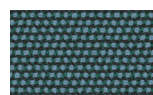
Heath  
21L



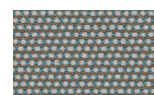
Peppercorn  
20L



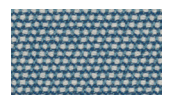
Rock Pool  
23L



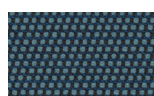
Tropic  
24L



Skylark  
25L



Nautica  
26L



Blue Reef  
27L



Cosmos  
28L



Amethyst  
29L

# Central module

Designer  
Rodolfo Dordoni

Collection  
Grand Bitta

Reference  
KS7003500

4/4

## Rope Colour Options

## Bela Rope



Basalt  
Z01



Shore Line  
Z02



Nimbus  
Z03



Polar White  
Z04



Dry Vine  
Z05



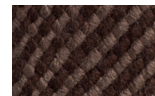
Reed  
Z06



Dusk  
Z07



Riverbed  
Z08



Terra Firma  
Z09



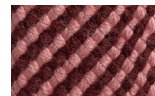
Chesnut  
Z10



Black Cacao  
Z14



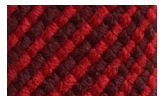
Gypsum  
Z11



Dragon Tree  
Z12



Sumac  
Z13



Madder Root  
Z15



Red Mud  
Z16



Turmeric  
Z19



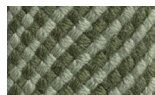
Champa  
Z20



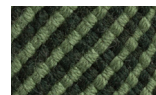
Charoli  
Z18



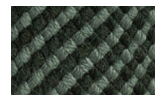
Tamarind  
Z17



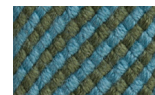
Bitter Gourd  
Z21



Foliar  
Z22



Evergreen  
Z23



Sea Grass  
Z25



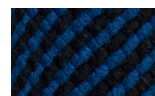
Teal  
Z24



Azur  
Z28



Blue Slate  
Z29



Midnight  
Z30



Lavandin  
Z27



Tree Top  
Z26