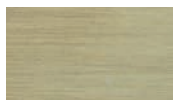




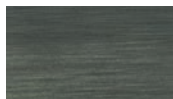
Kashmir Bordeaux

Kashmir Sucre

Kashmir Mousse



Ottone satinato
Satin brass



Metallo brunito
Burnished metal



Metallo nichelato
Nickered metal

Struttura seduta e schienale in multistrato di faggio. Imbottitura in poliuretano espanso a densità differenziata con rivestimento in fibra acrilica. Basamento fisso o girevole rivestito **in ottone satinato, in metallo brunito spazzolato a mano o in metallo nichelato satinato, con vernice opaca**. Profilo decorativo e bottone nella medesima tonalità di cuoio.

A richiesta è possibile avere il basamento in una diversa tipologia di metallo con un supplemento da definire in base al metallo scelto.

A richiesta è possibile avere profilo e bottone nelle altre tonalità di cuoio previste dal catalogo (escluso versione mongolia).

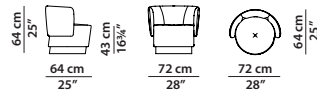
Seat and backrest frame in beech plywood. Differentiated density polyurethane foam filling with acrylic fibre covers. Fixed or revolving base covered **with satin-finished brass, in hand-finished burnished metal or in satin nickered metal, with matte varnish**. Decorative piping and button in the same shade of leather

On request it is possible to have the base in a different metal, with a surcharge to be defined according to the metal chosen.

Upon request, it is possible for the decorative piping and the button to be in the other shades of leather shown in the catalogue (mongolia version excluded).

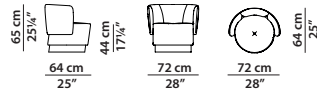
72 x 64 h64

Poltrona. Armchair.



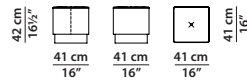
72 x 64 h65

Poltrona con base girevole.
Revolving armchair.



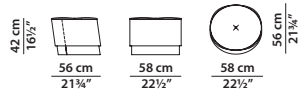
41 x 41 h42

Pouf.



58 x 56 h42

Pouf.
Disponibile anche in mongolia.
Also available in mongolia.



Ø122 h28

Pouf.

